

ARBORETUM TREE LIST

Common Name	Scientific Name
1. Crapemyrtle	<i>Lagerstroemia indica</i> 'Muskogee'
2. Kousa Dogwood	<i>Cornus kousa</i>
3. Japanese Maple	<i>Acer palmatum</i> 'Emperor 1'
4. Scarlett Oak	<i>Quercus coccinen</i>
5. American Hornbeam	<i>Carpinus caroliniana</i>
6. Japanese Maple	<i>Acer palmatum</i> 'Sango Kaku'
7. Goldenraintree	<i>Koelreuteria paniculata</i>
8. Winterberry	<i>Ilex verticillata x serrata</i> 'Sparkleberry'
9. Sweetbay Magnolia	<i>Magnolia virginiana</i>
10. Big Flowered Silverbell	<i>Halesia diptera magniflora</i>
11. White Fringetree	<i>Chionanthus virginicus</i>
12. White Spruce	<i>Picea glauca</i> 'Canadian Weeper'
13. Chestnut Oak	<i>Quercus montana</i>
14. Nuttall Oak	<i>Quercus texana</i>
15. Shingle Oak	<i>Quercus imbricaria</i>
16. Sargent Crabapple	<i>Malus sargentii</i>
17. Japanese Maple	<i>Acer palmatum</i> 'Seiryu'
18. Common Smoketree	<i>Cotinus coggygria</i>
19. Dogwood	<i>Cornus florida</i> 'Appalachian Spring'
20. Amur Maple	<i>Acer ginnala</i>
21. Eastern Redbud	<i>Cercis canadensis</i>
22. Atlantic Whitecedar	<i>Chamaecyparis thyoides</i> 'Glauca'
23. Limber Pine	<i>Pinus flexilis</i> 'Vanderwolf's Pyramid'
24. Black Tupelo	<i>Nyssa sylvatica</i> 'Zydeco Twista'
25. Chasetree	<i>Vitex agnus-castus</i> 'Shoal Creek'
26. Black Tupelo	<i>Nyssa sylvatica</i>
27. Kentucky Coffeetree	<i>Gymnocladus dioicus</i>
28. London Planetree	<i>Platanus x acerifolia</i>
29. Crapemyrtle	<i>Lagerstroemia indica</i> 'Sarah's Favorite'
30. Flowering Dogwood	<i>Cornus florida</i>
31. Northern Pin Oak	<i>Quercus ellipsoidalis</i>
32. Babylon Weeping Willow	<i>Salix babylonica</i>
33. Sawtooth Oak	<i>Quercus acutissima</i>
34. Water Oak	<i>Quercus nigra</i>
35. Baldcypress	<i>Taxodium distichum</i>
36. Kousa Dogwood	<i>Cornus kousa</i> 'Stellar Pink'
37. American Yellowwood	<i>Cladrastis kentuckea</i>
38. White Ash	<i>Fraxinus Americana</i>
39. Japanese Maple	<i>Acer palmatum</i> 'Crimson Queen'
40. Overcup Oak	<i>Quercus lyrata</i>
41. Shumard Oak	<i>Quercus shumardii</i>
42. Cucumbertree Magnolia	<i>M. acuminata</i> 'Butterflies'
43. Jane Magnolia	<i>Magnolia 'Jane'</i>

44. October Glory Red Maple	<i>Acer rubrum</i> 'October Glory'
45. Willow Oak	<i>Quercus phellos</i>
46. Redbud	<i>Cercis Canadensis</i> 'Alba'
47. Dawn Redwood	<i>Metasequoia glyptostroboides</i>
48. Redbud	<i>Cercis Canadensis</i> 'Forest Pansy'
49. Persian Ironwood	<i>Parrotia persica</i> 'Persian Lace'
50. Chinese Pistache	<i>Pistacia chinensis</i>
51. Amur Maple	<i>Acer ginnala</i>
52. American Sweetgum	<i>Liquidator styraciflua</i> 'Rotundiloba'
53. Downy Serviceberry	<i>Amelanchier arborea</i>
54. Possumhaw	<i>Ilex decidua</i> 'Warren's Red'
55. Eastern Redcedar	<i>Juniperus virginiana</i>
56. Yoshino Cherry	<i>Prunus xyedoensis</i>
57. Witch hazel	<i>Hamamelis x intermedia</i> 'Arnold Promise'
58. Katsuratree	<i>Cercidiphyllum japonicum</i>
59. Autumn Blaze Red Maple	<i>Acer x freemanii</i> 'Jeffersred'
60. Sourwood	<i>Oxydendrum arboreum</i>
61. Paperbark Maple	<i>Acer griseum</i>
62. Japanese Maple	<i>Acer palmatum</i> 'Waterfall'
63. Japanese Maple	<i>Acer palmatum</i> 'Bloodgood'
64. Red Buckeye	<i>Aesculus pavia</i>
65. Tuliptree	<i>Liriodendron tulipifera</i>
66. Black Cherry	<i>Prunus serotina</i>
67. Bradford Pear	<i>Pyrus calleryana</i> 'Bradford'
68. Sugar Hackberry	<i>Celtis laevigata</i>
69. Green Ash	<i>Fraxinus pennsylvanica</i>
70. American Beech	<i>Fagus grandifolia</i>
71. Japanese Maple	<i>Acer palmatum</i> 'Burgundy lace'
72. White Oak	<i>Quercus alba</i>
73. Swamp White Oak	<i>Quercus bicolor</i>
74. Northern Red Oak	<i>Quercus rubra</i>
75. Loblolly Pine	<i>Pinus taeda</i>
76. Pecan	<i>Carya illinoensis</i>
77. Common Sassafras	<i>Sassafras albidum</i>
78. Sugar Maple	<i>Acer saccharum</i>
79. Red Sunset Red Maple	<i>Acer rubrum</i> 'Franksred'
80. Dawn Redwood	<i>Metasequoia glyptostroboides</i> 'Ogon'
81. Chokecherry	<i>Prunus virginiana</i> 'Shubert'
82. Arizona Cypress 'Glauca'	<i>Cupressus arizonica var. glabra</i>
83. Japanese Zelkova	<i>Zelkova serrata</i> 'Green Vase' ©
84. Mimosa	<i>Albizia julibrissin</i> 'Summer Chocolate'
85. Smoketree	<i>Cotinus coggygria</i> 'Golden-Spirit'
86. Black Tupelo	<i>Nyssa sylvatica</i> 'Wildfire'
87. Ginkgo (male)	<i>Ginkgo biloba</i>
88. Witchhazel 'Jelena'	<i>Hamamelis xintermediate</i>

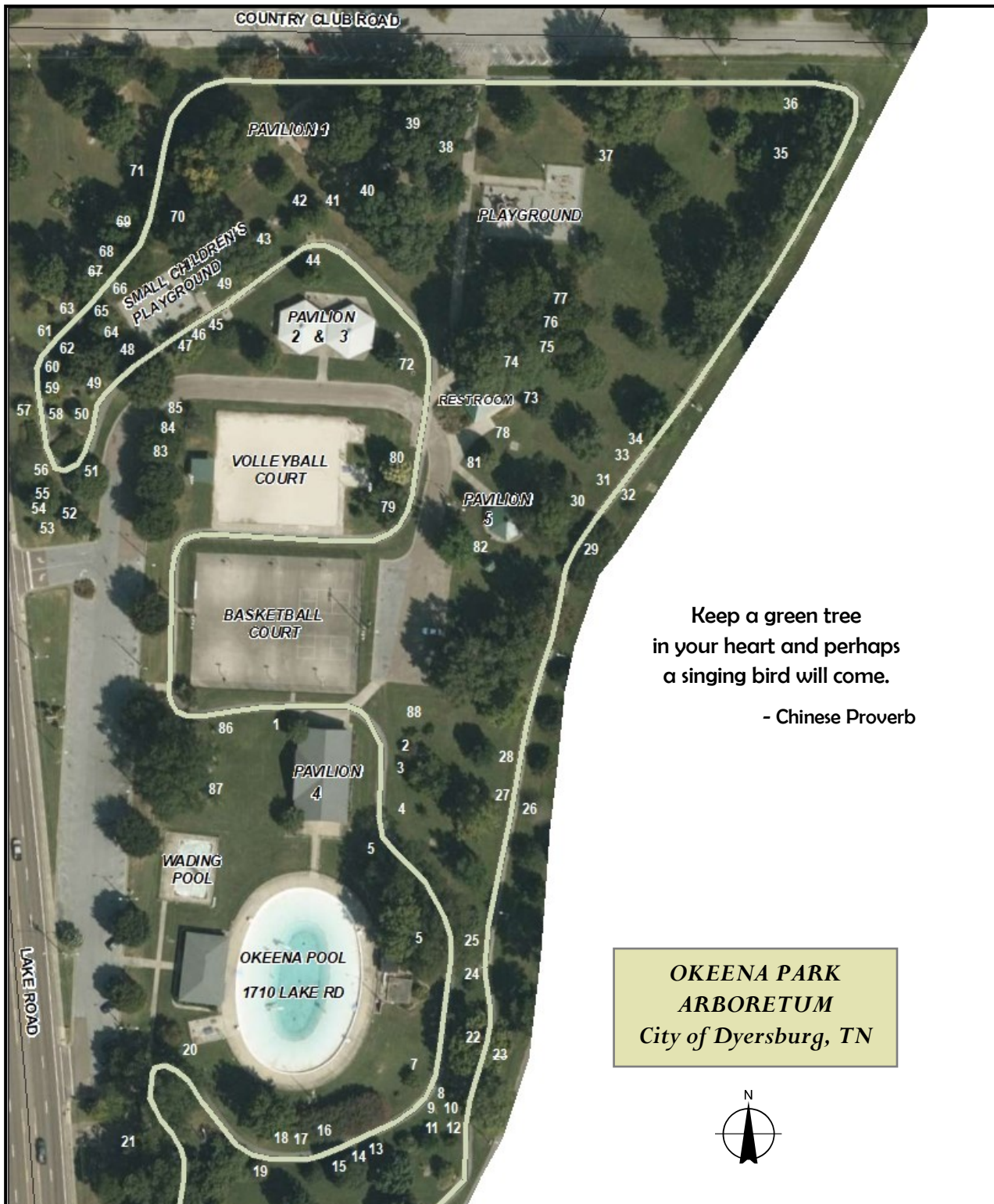
Okeena Park



Arboretum

Self-Guided Tour

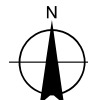




**Keep a green tree
in your heart and perhaps
a singing bird will come.**

- Chinese Proverb

**OKEENA PARK
ARBORETUM
City of Dyersburg, TN**



Okeena Park Arboretum is located in a ten acre public park in the center of Dyersburg, Tennessee. Many of the trees are part of an old growth forest.

Dyer County Master Gardeners obtained a grant from the Tennessee Urban Forestry Council to reforest the park in 2003. Okeena Park Arboretum was certified as a level 1 arboretum in 2005. Trees now number 69 species. Now, we are a level II arboretum.

A one mile walking trail enables visitors to view the trees, flower beds, and historical markers up close. Recreational opportunities include a swimming pool, wading pool, basketball court, volleyball court, and two age appropriate children's playgrounds. Pavilions can be reserved for gatherings and events.

Dyer County Master Gardeners, Dyersburg Garden Club, Good Earth Garden Club, and Dyersburg Parks and Recreation Department have planted and maintained the arboretum as well as funded the arboretum.

Special thanks to all who have planned, planted, and cared for the trees, now and into the future.

This self guided tour includes 69 species of trees. A pamphlet with the list of trees can be picked up at Dyersburg Activity Center at 1010 Recreation Drive Dyersburg, TN 38024 or downloaded from www.tufc.com/arboreta.html.

**Okeena Park Arboretum
1710 Lake Road
Dyersburg, Tennessee 38024**