



BMF PROPERTIES, INC.
DB 410/PG 511

CHARLIE ENDMON
DB 302/PG 878

TEMPORARY
CUL-DE-SAC

BMF PROPERTIES, INC.
DB 365/PG 690

BMF PROPERTIES, INC.
DB 365/PG 690

FUTURE DEVELOPMENT

1658

1646

1634

1622

1610

DREW STREET

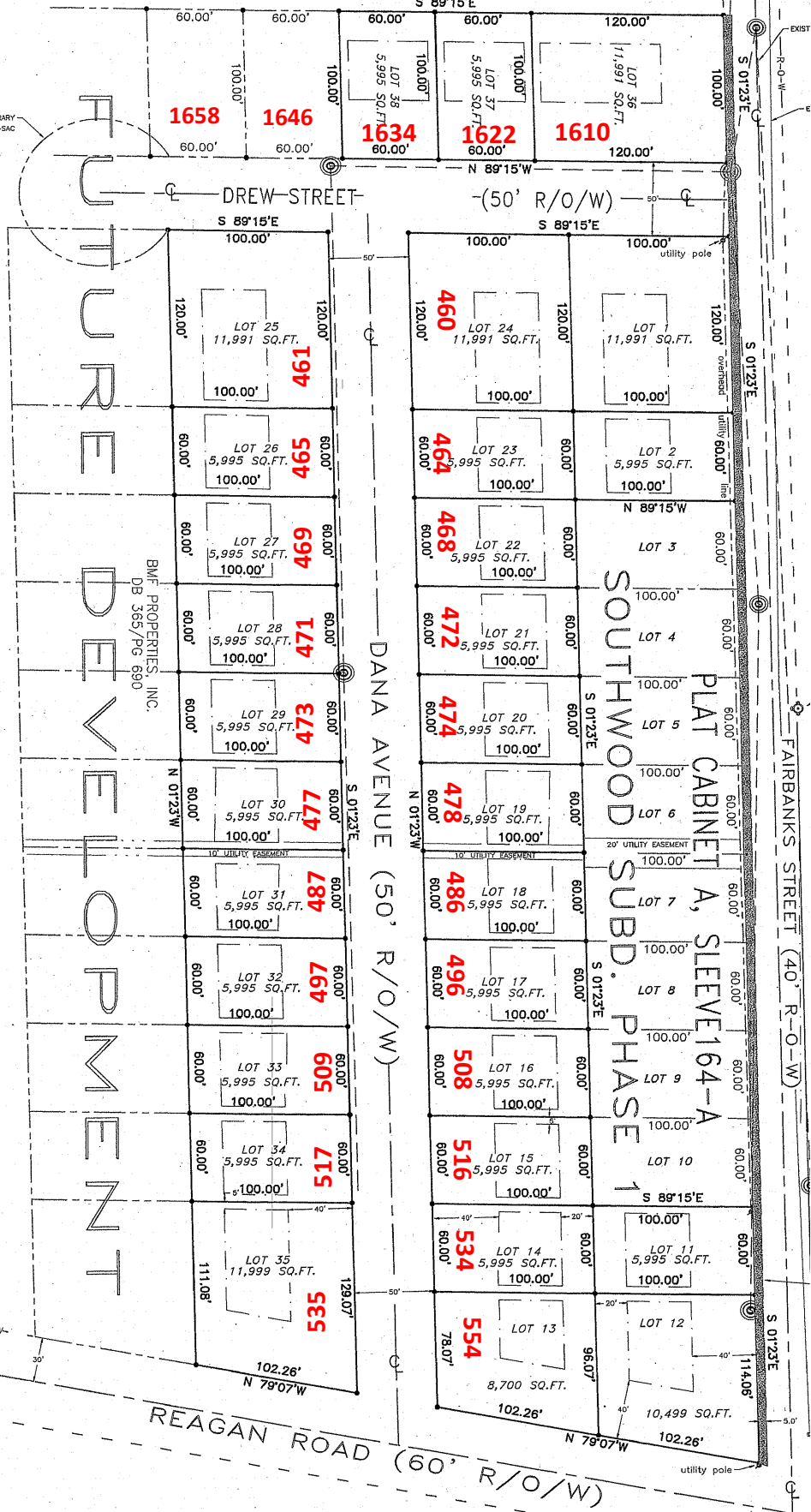
(50' R/O/W)

DANA AVENUE (50' R/O/W)

SOUTHWOOD SUBD. PHASE 1
PLAT CABINET A, SLEEVE 164-A

FAIRBANKS STREET (40' R/O/W)

REAGAN ROAD (60' R/O/W)



SOUTHWOOD SUBD PH 2

911-ADDRESSES IN RED