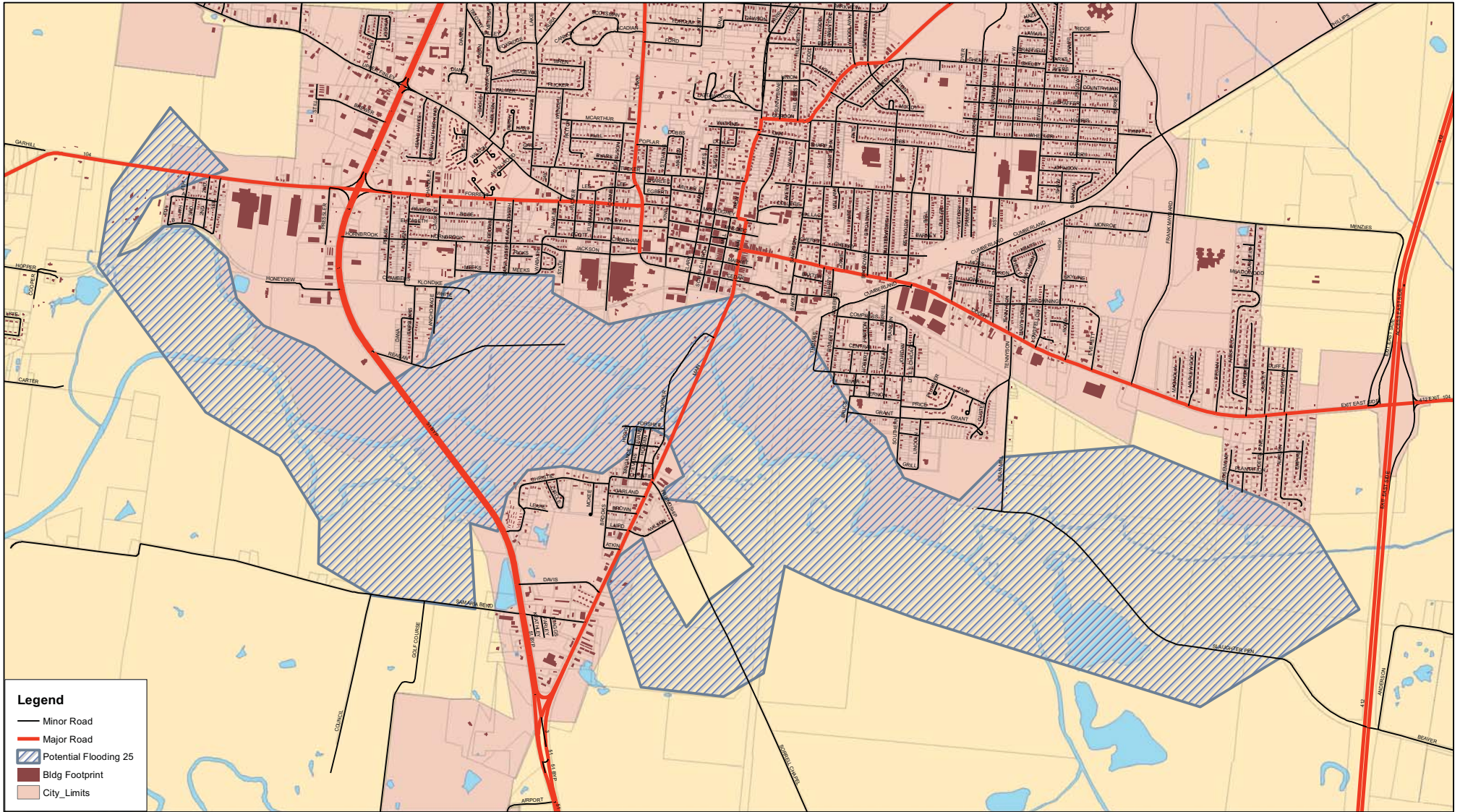
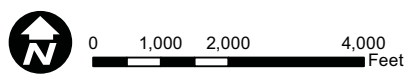


# City of Dyersburg - Potential Flooding of Forked Deer River at 25'



**Legend**

- Minor Road
- Major Road
- ▨ Potential Flooding 25
- Bldg Footprint
- City\_Limits



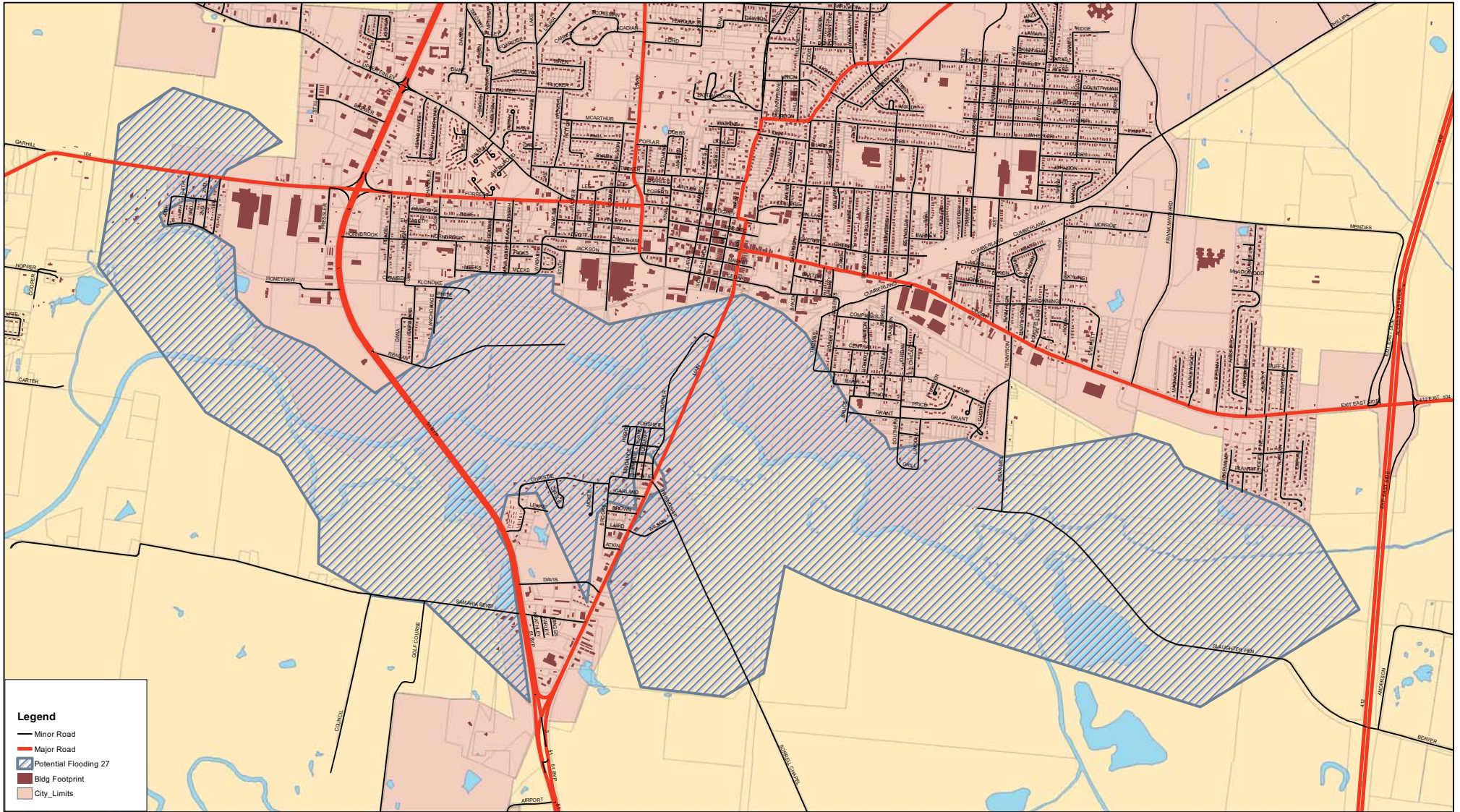
Map Created By:  
 City of Dyersburg  
 GIS Department  
 April 26, 2011  
[www.dyersburgtn.gov/gis](http://www.dyersburgtn.gov/gis)

**These areas could be affected when Forked Deer River Stage reaches 25'. To view River Levels go to [www.weather.gov](http://www.weather.gov).**  
 The City of Dyersburg is closely monitoring the situation, and will make all attempts to issue a public warning at the earliest opportunity. If required, evacuation notices will be issued by the City of Dyersburg through local newspapers, local radio stations and the City's emergency telephone notification system (CodeRed).

**\*Information Based on Forked Deer River Gauge at S Main Ave. Datum: 244.86' NWS 25' River Stage Prediction**

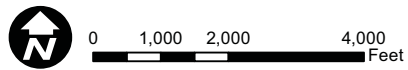


# City of Dyersburg - Potential Flooding of Forked Deer River at 27'



**Legend**

- Minor Road
- Major Road
- ▨ Potential Flooding 27'
- Bldg Footprint
- City Limits



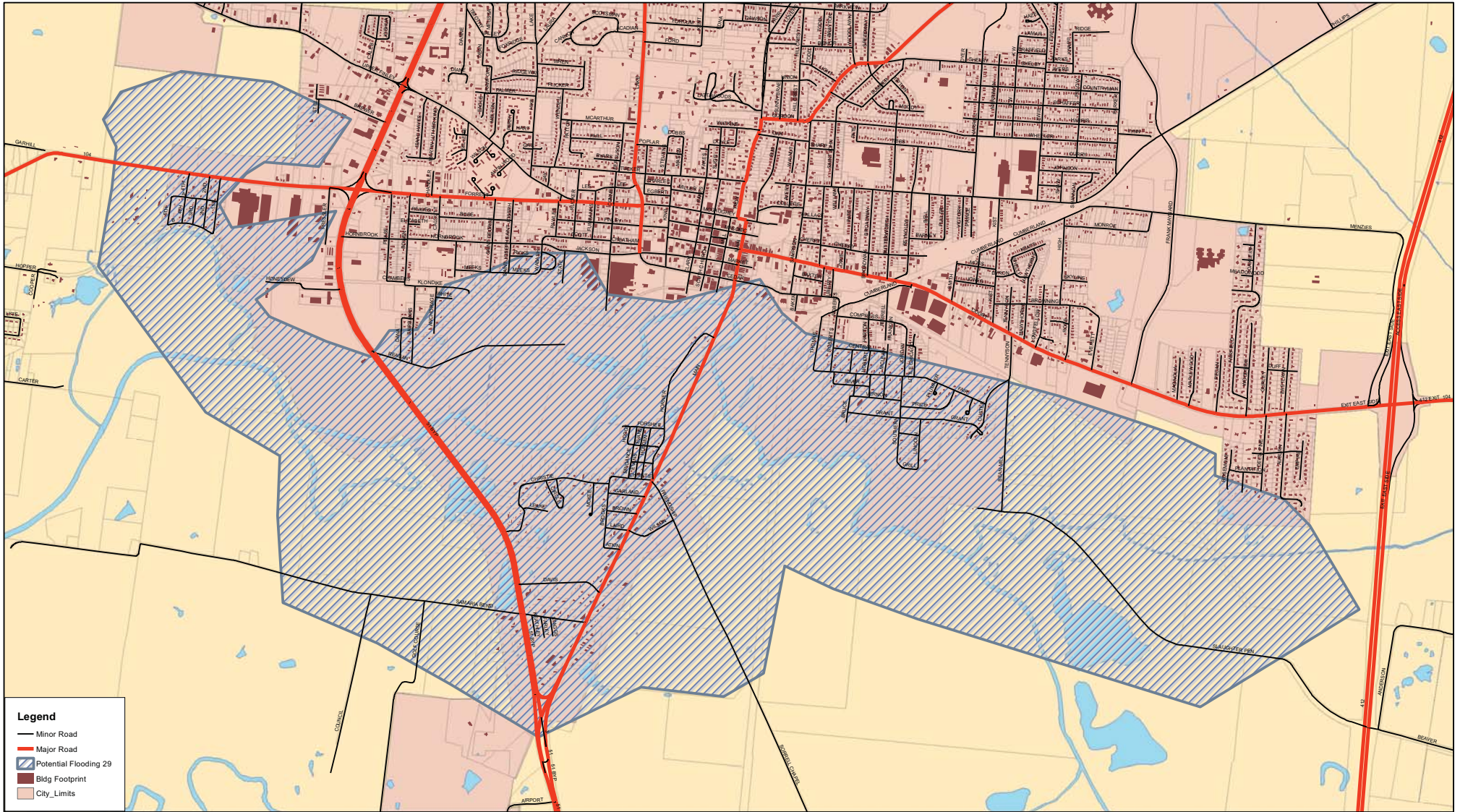
Map Created By:  
 City of Dyersburg  
 GIS Department  
 April 26, 2011  
[www.dyersburgtn.gov/gis](http://www.dyersburgtn.gov/gis)

**These areas could be affected when Forked Deer River Stage reaches 27'. To view River Levels go to [www.weather.gov](http://www.weather.gov).**  
 The City of Dyersburg is closely monitoring the situation, and will make all attempts to issue a public warning at the earliest opportunity. If required, evacuation notices will be issued by the City of Dyersburg through local newspapers, local radio stations and the City's emergency telephone notification system (CodeRed).

**\*Information Based on Forked Deer River Gauge at S Main Ave. Datum: 244.86' NWS 27' River Stage Prediction**

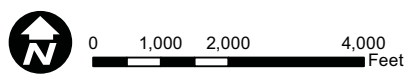


# City of Dyersburg - Potential Flooding of Forked Deer River at 29'



**Legend**

- Minor Road
- Major Road
- ▨ Potential Flooding 29'
- Bldg Footprint
- City Limits



Map Created By:  
 City of Dyersburg  
 GIS Department  
 April 26, 2011  
[www.dyersburgtn.gov/gis](http://www.dyersburgtn.gov/gis)

**These areas could be affected when Forked Deer River Stage reaches 29'. To view River Levels go to [www.weather.gov](http://www.weather.gov).**  
 The City of Dyersburg is closely monitoring the situation, and will make all attempts to issue a public warning at the earliest opportunity. If required, evacuation notices will be issued by the City of Dyersburg through local newspapers, local radio stations and the City's emergency telephone notification system (CodeRed).

**\*Information Based on Forked Deer River Gauge at S Main Ave. Datum: 244.86' NWS 29' River Stage Prediction**